




The COMMUNITY
FOUNDATION *for* Ireland

Annual Report 2008

connecting people
who care with causes
that matter



Contents

Chairperson's Report	1
Chief Executive's Review	2
About The Community Foundation for Ireland	4
Trends in Irish Philanthropy- Research Report	7
Highlights 2008	8
Overview of Funds and Grant-making	9
Donor Services	10
2009 Targets	12
Grant Making	13
Examples of Grants	14
Donor Funds	18
Community Foundation Grants	22
Financial Statement	33

Chairperson's Report

2008 was another year of significant progress in the development of The Community Foundation for Ireland. Despite economic woes, we saw an increase in donor funds at The Foundation. We have made a real impact since our establishment in 2000 and by year end had surpassed the €5million mark in grants by the organisation to date. We still need to get our message out and for people to realise that The Community Foundation, while a charity is much more than that.



Brian Wilson
Chairperson

When donors give monies to The Community Foundation we are not the object of their charitable intentions rather the vehicle. What we bring to the picture is expertise in this process. In 2008 we were able to channel 455 grants worth just under €1million, from donor funds to community and voluntary groups and charities around the country and also, but to a lesser extent, overseas. Much of this was possible because of the continued income earned from the permanent endowed funds totalling more than €23million at year end. We must say thanks again for the generosity of individuals, families and companies across Ireland. They are only part of the picture however as it is the work of local community groups and charities that inspires this giving.

Promoting and raising awareness of philanthropy is something we continue to do well. The Philanthropist of the Year Awards are designed to publicly recognise the contributions of donors, their leadership on these issues as well as the value of philanthropy generally for our society. The County Monaghan Fund continued to develop under the new chairmanship of Cathal McCarthy. During the year a significant new family fund was among the new donor advised funds established at The Foundation.

Our workload with professional advisors increased in 2008. Advisors are positioned to advise their clients on giving options. The Community Foundation established a new dedicated sub-committee of the board made up of advisors from a number of disciplines including law, accounting, tax and wealth management. The advisor update is now sent by email to a database of over 1,300 professional advisors across Ireland. We organised three seminars around philanthropy during

2008 for donors and their advisors. We undertook a significant piece of primary research. Entitled 'Philanthropy, The Views of Those Who Advise the Rich' it was a survey of 75 professional advisors from across Ireland. We were delighted to play a significant role in the (now former) US Ambassador, Thomas C. Foley's philanthropy initiative in February and this helped to shine a welcome spotlight on the subject. Family philanthropy is a key area for development at The Foundation and our family philanthropy seminar in October was extremely well attended.

We will continue to work hard in 2009 and among the Board's priorities will be to continue to lobby Government on behalf of donors to create a more favourable tax environment for philanthropic giving. During 2008 we were fortunate in strengthening the board further. John Rockett, formerly head of AIB Private Banking and Dr Brian Keogh, a physician and former past President/Treasurer of the Royal College of Physicians of Ireland joined us. We also expanded the number of, and numbers on, our sub-committees. The Grants Assessment Panel continued to ensure our grant making policies and processes were rigorous, transparent and effective. Our Finance, Administration, Investment and Governance Committee welcomed a new member in Richard George. The aforementioned advisory panel of professional advisors is helping The Community Foundation increase the awareness levels of philanthropy to those in the legal and financial worlds.

I would like to say that it is a pleasure working with our donors. Finally, I would like to thank fellow members of the Board and all the staff of The Community Foundation for Ireland for their continued commitment and enthusiasm around the work.

Chief Executive's Review

The value of a strong Community Foundation for Ireland became even more apparent as recession hit Ireland in 2008.

Our purpose—to connect donors with deserving projects around Ireland—made significant strides this year with increases in funds invested and in grants awarded. Overall, in 2008, the Foundation awarded grants on behalf of donors totalling just under €1 million. This included €343,000 from the Small Grants Programme which is derived from the interest earnings of our Endowment Fund for Ireland and which supported 353 community projects - in every county in the Republic of Ireland. These addressed issues such as families at risk, older people, ethnic minorities, carers, mental health and sexual minorities. Our motivation with this programme is to support current issues in Ireland. The groups supported typically do not have the same access to mainstream funding as other charities. The Small Grants Programme was hugely over-subscribed – by as much as 10:1 in the final round, indicating a serious need for funds among the groups we support.



Tina Roche
Chief Executive

In 2008 the Ray Murphy Fund was established, focussing on grants to build leadership within the community sector for the next 10 years, 2008 – 2017. Ray passed away in 2007 and this fund was established in his memory.

In 2007 it was reported that Ireland had 33,000 millionaires. We can be certain that by the end of 2008 the number was fewer, but having said that it is nevertheless still a significant number when compared to a decade earlier. Wealth is maturing and philanthropy can be a natural part of estate planning. I personally am optimistic for the future of Ireland generally and the future of philanthropy specifically. During 2008, over €7million in new endowment donations was achieved, however **endowment values** suffered as stock markets worldwide dipped. The Community Foundation managed to generate a good return but the value of investments fell by over 17%. Sad to say, but this was actually a good result compared to foundations internationally. New funds established in the latter part of 2008 will also help broaden our grant-making in 2009.

In 2008 The Foundation focussed even more on **professional advisors**—lawyers, tax advisors, accountants and wealth managers. Community foundations around the world find that this is a more efficient means of communicating philanthropic options to potential donors. These activities were supported by the publication of the

two quarterly newsletters by The Foundation. Addressed at donors and advisors respectively, they were complemented by a significant increase in our print and broadcast media communications.

The Community Foundation continued its **Philanthropy Seminar** series during 2008. These are aimed at stimulating philanthropy in Ireland and are focussed at successful individuals, families and professional advisors. Our first seminar of the year, hosted by Ulster Bank, was we believe, the first dedicated seminar in Ireland on philanthropy to professional advisors. Speakers included myself, Nora Lillis of William Fry Solicitors, Adrian Crawford of KPMG and Jacinta Morris, a solicitor practising in Naas. Jacinta also worked with us during the year to increase awareness of The Community Foundation among fellow legal professionals.

The Community Foundation for Ireland hosted the second **Philanthropist of the Year Awards** in December. These are designed to recognise and honour those individuals who have shown exceptional generosity and commitment through direct financial support and engagement with charities and voluntary organisations both here in Ireland and abroad. Declan Ryan was named Philanthropist of the Year - Ireland for his work with The One Foundation and Social Entrepreneurs Ireland amongst

others. Jane Corboy was awarded Philanthropist of the Year – International for her exceptional work as the founder of The Next Step, an Irish-Georgian charity which cares for mentally and physically disabled children in Georgia, the former Soviet Republic. In 2008 we added a new category to the awards - Philanthropist of the Year – Local, which was awarded to Limerick man, Ralph Parkes. This new award honours individuals who have made a significant impact in their own local community or at a regional level in Ireland. His financial backing, donation of time, expertise, and access to his business contacts helped ensure that the Mid West Spina Bifida & Hydrocephalus Association now operates what it regards as the finest facility in the Mid-West region.

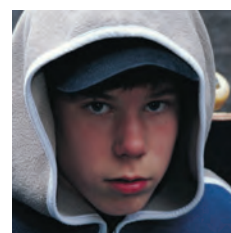
The **County Monaghan Fund** continued to make strides. Among the new donations was one for €50k which was matched with a further €25k from The Community Foundation. Income earned from the €75k will be earmarked over the coming years to support scholarships for young people from the county to access third level education at DCU. This is a wonderful example of how the pooling of resources by many people can make an impact in a meaningful and strategic manner. Congratulations to new Chair Cathal McCarthy and his vibrant committee and also to Seamus McDermott who continues to

work with the committee to build the fund.

We had a successful start to our new **Strategic Grants Programme** which complements the work of the Small Grants Programme and the grant making from donor-advised funds. A grant of €282,000 over a three period has been allocated to GLEN. More details on this are included in our Case Studies section.

I would like to thank Atlantic Philanthropies, Philanthropy Ireland and the range of professional advisors that we have worked with during 2008 to advance the development of philanthropy in Ireland. Transatlantic ties through the TCFN Peer Exchange continued as they supported a training visit to The Czech Republic.

Finally, I would like to thank the Board and the staff of The Community Foundation for Ireland for their ongoing effort and passion.



Tina Roche (centre) with two of the winners of Philanthropist of the Year, Ralph Parkes and Jane Corboy.



About The Community Foundation for Ireland

The Community Foundation for Ireland makes grants on behalf of donors. We connect individuals, families, companies and other organisations to the most deserving and effective local grassroots causes.

When donors give monies to The Community Foundation, it is not the object of their charitable intentions, rather the vehicle. By providing a service for donors, they can be more strategic, more impactful and we hope, they can enjoy their philanthropy more.

Ireland has over 20,000 community, voluntary and charitable organisations and it can be difficult to choose which organisations to help in order to support a local community. The Community Foundation provides a mechanism to support local groups where a small amount of money can make a big impact on their work.

With a minimum of bureaucracy, donors and the community get maximum return on their charitable investment. We also work with a small but increasing number of donors who wish to support projects and charities overseas.

History

The first Community Foundation was established in Cleveland, Ohio in 1914, and by the end of 2008 1,441 had been established in 51 countries across the world, managing over €40 billion in assets.

The Community Foundation for Ireland was established in 2000 with the remit of civic philanthropy and civic leadership. It came about as visionary leaders in Ireland looked to the future and sought new mechanisms to build strong communities and support social change. In 1998 a paper discussing the establishment of a community foundation was produced on behalf of Combat Poverty. This led the Government to issue a challenge to the private sector to establish a community foundation.

Founded by businesses, NGOs, employer organisations and Government, The Community Foundation for Ireland received initial government support of IR£1 million. All subsequent funding has been raised independently of government and the organisation is an independent entity.

Leadership

The Board of Directors is comprised of volunteers representing the rich diversity and broad interests of our community. They provide the leadership to conduct the business affairs of The Foundation. They are all community leaders chosen for their sensitivity to, and knowledge of, Ireland's needs.

Strategic Partnerships

Board members and staff sit on sister organisations and committees to guide specific areas of the Foundation's endeavours – including:

- Atlantic Philanthropies
- Business In The Community Ireland
- Community Foundation Network – UK
- The Community Foundation for Northern Ireland
- Philanthropy Ireland
- Transatlantic Community Foundation Network
- Trans Giving Europe



Patron: Her Excellency, Mary McAleese, President of Ireland



Chairperson:
Brian Wilson

Brian served in various positions with AIB Group, including Group General Manager in Great Britain and Managing Director in Ireland. He worked as Senior Advisor and Vice President of the World Bank and Director of the Aga Khan Fund for Economic Development. He is a past President of the Irish Bankers' Federation and Vice President of the European Bankers' Federation.



Harry Byrne
Director

Harry retired from Guinness Ireland as Director in 1996. He is currently Chairman of the Iveagh Trust, a Trustee of several Pension Schemes and Council Member at the Eye & Ear Hospital.



Barry Connolly
Director

Barry is the founder and Managing Director of Richmond Marketing, a leading supplier of premium beverages in the Irish market. He previously worked as Marketing Director of the Sunday Tribune and was a shareholder and Managing Director of a number of commercial radio stations.



Adrian Crawford
Director

Adrian is a tax partner in KPMG, Dublin. He is an Honours Law Graduate of Trinity College, Dublin, a barrister at law and a Fellow of both the Institute of Chartered Accountants in Ireland and the Irish Taxation Institute. He is also a former President of the Institute of Taxation in Ireland.



Brian Geoghegan
Director

Brian is a Director, Leaseplan Ireland and MRPA Kinman. He is a member of the National Economic & Social Council and sits on the Advisory Council of the Policy Institute of Trinity College, Dublin.



Eamonn Heffernan
Director

Eamonn is currently a Non Executive Director of Irish Life & Permanent. An actuary, he was formerly a partner with Mercer Human Resource Consulting. He is a past President of the Society of Actuaries in Ireland and is a former Chairman of the Pensions Board and of the Irish Association of Pension Funds



Sister Stanislaus
Kennedy
Director

Sr. Stan is a Religious Sister of Charity and a social innovator. She was a founder member of the National Federation of Youth Clubs; established Focus Ireland, The Sanctuary and more recently The Immigrant Council of Ireland and Young Social Innovators among other organisations.



Anna Lee
Director

Anna has worked in the area of community development and anti-poverty since 1986 and has been Manager of the Tallaght Partnership since 1991. She was Chairperson of the Combat Poverty Agency and is currently Chairperson of the South Dublin County Enterprise Board and the Dublin Employment Pact.



John Rockett
Director

John is a chartered accountant and retired in 2008 as Head of Private Banking at AIB. He is a director of a number of private investment companies in Ireland and overseas.



Dr Brian Keogh,
Director

Brian is a physician and Past President/Treasurer of the Royal College of Physicians of Ireland. He is also a Former Chairman of the Institute of Public Health-North/South, an Honorary Fellow of the American College of Physicians and author of over 100 scientific publications.



John Gallagher
Goodwill
Ambassador

John is Chairman of Crownway Investments. The group manages investments in both private and public companies. He previously founded the Magnum Group and Celtic Utilities. He retired as Chairperson of The Community Foundation at the end of 2007 and is currently a Goodwill Ambassador for The Foundation.



Chris Horn
Goodwill
Ambassador

CEO, IONA Technologies. Chris is a former Chairman of the Community Foundation for Ireland and is currently a Goodwill Ambassador for The Foundation.

About The Community Foundation for Ireland

The Community Foundation for Ireland has three very important sub-committees, each focused on a clear agenda.

Finance, Administration, Investment and Governance Committee (FAIG)

Good governance is hugely important to donors. The Community Foundation seeks to ensure at all times that it is operating to the highest standards. The FAIG committee also plays a hugely important role in terms of the investment of the endowment fund.

2008 members were:

1. Harry Byrne (Chair), Director of The Community Foundation for Ireland
2. Eamonn Heffernan, Director of The Community Foundation for Ireland
3. Seamus Howley, Seamus worked for many years as a tax consultant and is a Past President of The Irish Taxation Institute, he retired from the committee in 2008
4. Richard George, Partner, KPMG Richard has also been a leading committee member of The Council of the International Federation of Accountants (IFAC)

Grants Assessment Panel

The expertise of this group is critical in shaping policy around grant making and disbursement and ensures that monies are as wisely spent as possible. In 2008, grant requests outnumbered funds available by 10:1 in some rounds, making this work even more important.

2008 members were:

Anna Lee (Chair), Director of The Community Foundation for Ireland

Daragh Matthews	Age Action Ireland
Ciaran McKinney / Odhran Allen	GLEN
Jean-Pierre Eyanja	Integrating Ireland
Sharon Keane	Combat Poverty Agency
Brian Keogh	Director of The Community Foundation for Ireland

Professional Advisors Advisory Group

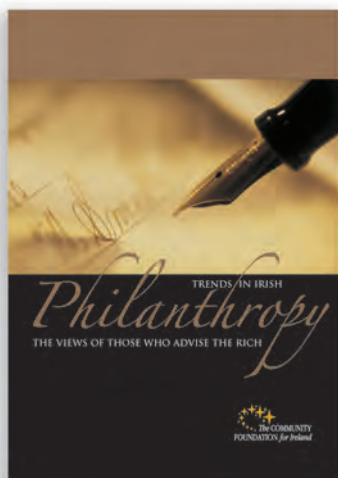
Established in 2008, this group has sought to help develop a strategy for The Community Foundation to work in greater partnership with professional advisors. In 2008 the first ever piece of philanthropy research in Ireland among professional advisors was undertaken and this was a key objective for the year.

2008 members were:

John Rockett (Chair), also a Director of The Community Foundation for Ireland	
Nora Lillis / Elaine Rogers	William Fry Solicitors
Rory Quinlan	HSBC Private Banking
Fionnán O'Dwyer	Wealth Management
Anne Corrigan / Philip Smith	Arthur Cox
Eddie Murphy	Crowleys DFK
Pat McCormack / Fiona O'Regan	Barclays Wealth
Aidan McLoughlin / Jeremy Mitchell	Astons
Gervase MacCourt	MacCourt Financial Planning
Eoin Kennelly	Kennelly & Twomey Limited

Philanthropy, The Views of Those Who Advise the Rich

In 2008 The Community Foundation for Ireland completed the first ever comprehensive survey of Irish professional advisors' views on philanthropy. Taking part were wealth managers, tax advisors, solicitors and accountants representing some 40,000 high-net worth individuals and private clients.



Key findings of the report include:

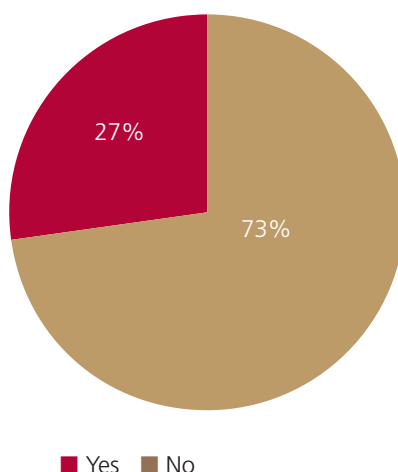
1. 27% of professional advisors reported an increase in enquiries about philanthropy in the last 12 months
2. When asked how a change in the current tax would affect philanthropy in Ireland **85% said a removal of the tax cap would increase giving**
3. When asked about their approach to the topic of philanthropy 58% of advisors had never discussed philanthropy with a client
4. 43% believed that clients require assets in excess of €1m, excluding one's principal residence, to start to think about philanthropy.
5. Charitable giving in Ireland has been estimated at €500m per annum. **56% believe this level of giving could double to €1billion by 2013**
6. 44% of advisors say less than €10,000 is the average left in wills for charitable purposes.

While overall levels of charitable bequests are low there are however some very significant charitable bequests being included in wills, figures from €50,000 to €50million were mentioned by advisors.

The report found that over one quarter of advisors had recorded an increase in their clients enquiring about philanthropy in the previous twelve months. It can typically take over two years from considering to engaging in philanthropy. This was therefore a very positive finding for the future of philanthropy in Ireland. Positive results were also reported for the longer term with 83% of advisors (who had an opinion on this topic) believing that charitable giving in Ireland could be doubled to €1 billion by 2013.

Overall the report indicated a growing awareness of philanthropy. It is hoped to use the research as a benchmark and conduct further similar research in the years ahead.

Are philanthropy enquiries increasing?



77.1% of advisors say that either none or 5% or less of their clients are engaged in philanthropy. On a more positive note 10.5% say that 11% or more of their clients are engaging in philanthropy.

The following statistics illustrate the early stage of philanthropy in Ireland.

Number of Clients Engaging in Philanthropy	Number of Advisors
None	27.1%
1-5%	50%
6-10%	11.4%
11-20%	8.6%
More than 20%	2.9%

Highlights 2008

Endowment Fund

Increased 13% to €22,685,865

11 New Funds established including a major family fund

Grants awarded

455 Grants awarded

worth almost €1 million

Over €5million in grants now made since inception

Major €282k multi-annual strategic grant made

Philanthropist of the Year Awards

Expanded to Include a Local Award.

Winners were: Declan Ryan (National);
Jane Corboy (International);
Ralph Parkes (Local)

Seminars

Over 100 people attended philanthropy seminars/events

Overview of Funds and Grant-making

The Community Foundation typically operates funds which can be either under the discretion of the Board or donor advised. Total grant making in 2008 was €984,114.46. Over half, €500,180.84, was from 19 Donor Advised Funds. The balance of €483,933.62 was made up of the funds and programmes run under the discretion of the Board of The Community Foundation. These were the Small Grants Programme, the new Strategic Grants Programme and the new Ray Murphy Fund.

Total grant making in 2008

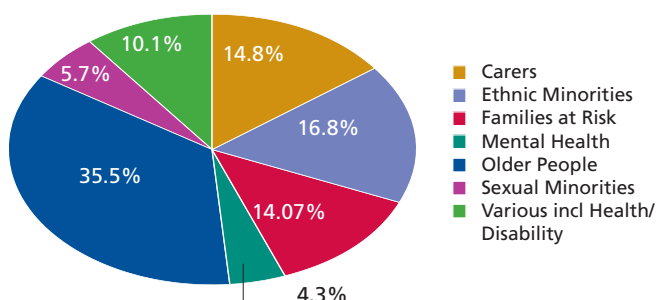
Source	No. of Grants	Amount Allocated
Strategic Grants Programme	2	€131,464.00
Small Grants Programme	353	€342,929.62
Donor Advised Funds	94	€500,180.84
Ray Murphy Fund	6	€9,540.00
Totals	455	€984,114.46

Small Grants Programme

The Community Foundation for Ireland focuses its small grant-making on six key areas determined by the board.

Grants awarded by topic area:

Key area	Amount €
Carers	50,637.80
Ethnic Minorities	57,545.00
Families at Risk	43,786.00
Mental Health	14,800.00
Older People	121,830.82
Sexual Minorities	19,700.00
Various-including Health/Disability	34,630.00
TOTAL	€342,929.62



Grants awarded by county from Small Grants Programme

	2005	2006	2007	2008
Antrim			1	0
Carlow	0	3	4	2
Cavan	1	7	6	5
Clare	5	12	17	9
Cork	8	28	27	29
Donegal	11	28	34	34
Dublin	43	104	105	84
Galway	4	21	35	30
Kerry	11	42	31	23
Kildare	1	8	9	7
Kilkenny	2	9	10	7
Laois	0	4	3	1
Leitrim	0	5	4	6
Limerick	7	15	29	14
Longford	2	7	11	3
Louth	0	2	3	6
Mayo	1	18	21	23
Meath	1	4	6	6
Monaghan	7	10	3	5
Offaly	2	7	6	8
Roscommon	1	7	11	10
Sligo	3	6	16	9
Tipperary	8	17	23	11
Waterford	3	9	11	3
Westmeath	1	4	5	2
Wexford	1	10	11	9
Wicklow	3	5	12	7
TOTAL	126	392	454	353

Donor Services

The goal of The Community Foundation for Ireland is to simplify the giving process so that support reaches the neediest causes efficiently and in keeping with donors' specifications. Our motto is simple - 'connecting people who care with causes that matter' or as others put it - 'connecting the doers with the donors'.

Through its in-depth knowledge of local communities and causes, The Community Foundation assists both donors and those they seek to support. Practically, The Community Foundation for Ireland expertly oversees the management of donor funds (anonymously if desired), makes grants according to pre-agreed criteria and fulfils reporting and tax requirements for donors.

A Range of Options for Donors

Donors, whether individuals, families or companies, have many reasons for making a donation to the Endowment Fund for Ireland or for setting up their own fund with a specific purpose:

Manage Family Wealth

A family—young and old—may wish to establish an ethos of giving back to the community. The Community Foundation can set up a special fund in the family name to support the causes and organisations it cares about most.

Leave a Legacy

Donors can include The Community Foundation for Ireland in their will and help it establish a permanent charitable fund for the community, their county, the environment and other important causes.

Support your County

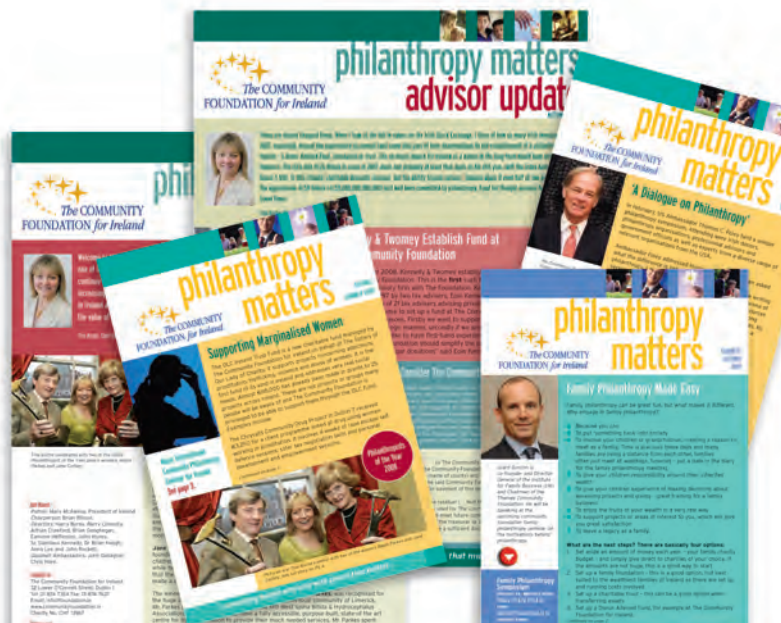
County Funds provide the opportunity to support the causes a donor cares about most in their county. The first County Fund in Ireland was established in Monaghan with the support of The Community Foundation for Ireland.

Corporate Giving: consider payroll giving or employee matched funds

Several companies have established their own named charitable fund at The Community Foundation, often with the involvement of employees. The Community Foundation for Ireland administers the company's charitable fund or budget and advises companies about new giving opportunities, payroll giving and more.

Some Terminology

- **Philanthropy** is different to 'charity' because it tends to be planned giving, developed with the input of professional advisors, family members and with detailed consideration of long-term returns on the investment. 'Charity' in the typical sense of the word tends to be more reactive.
- An **endowment fund** involves an initial capital sum that earns interest year-on-year. This income provides a continuing and growing resource that is disbursed to pre-selected targets, chosen according to any number of criteria.
- **Flow-through funds** are funds into which the donor makes periodic donations – typically year on year – which are then disbursed on their behalf. These are usually **donor-advised funds** – meaning that the donor targets something specific, be it a particular cause, social group or geographic area.



Directors at
Kennelly &
Twomey



Why do donors use The Community Foundation?

- Donors have as much or as little involvement as they wish, for instance, in terms of who or what causes are targeted, anonymity, how they want to time their giving, and whether they choose to give to an endowment fund, a donor-advised fund or to a mixture of both.
- Donors can be individuals, families, companies or other organisations.
- The Foundation provides advice and assistance in identifying and assessing grantees.
- There are no start-up costs.
- Administrative requirements are greatly reduced. Administration is pooled and a minimal annual fee is charged.
- The Foundation is a registered charity and offers tax efficiency..
- Professional advisors – lawyers, stockbrokers, accountants, wealth managers – can provide an additional confidential dimension in their clients' financial planning.

Simple Steps to Giving

- Discuss goals with your family or directors and your professional advisors.
- Decide what to give - cash, shares, proceeds of a property/ asset sale.
- Select issues and organisations that are important to you.
- Meet with The Community Foundation for Ireland staff to discuss your vision.
- Choose a fund type: Donor Advised, Field of Interest, Designated, or Unrestricted.
- Complete the paperwork.
- Select a name for your fund, e.g. recognising your family or the issues you support.
- Send your gift to The Foundation for management and administration.

Performance

2008 proved to be one of the most difficult ever years for investment. Additional income helped see the fund increase 13% overall from €20,274,515 at January 1 to €23,185,862 by year end. A strong income of 4.6% was achieved. This compares to 2007 when the fund value as of January 1 was €19,357,764 and an investment return of 4.3% was achieved. The overall investment return was down 17.6% however. The fund was sheltered from the worst impacts of the devastation in equity markets as it is very well diversified in terms of sectors and markets and in having a cap on the level of equities (65%) – throughout much of 2008, this was reduced to under 50%.

Donor Case Study The Kennelly & Twomey Fund

In mid 2008, Kennelly & Twomey established a Donor Advised Fund at The Community Foundation. This was the first such fund to be set up by a professional advisory firm at The Foundation. Kennelly & Twomey Limited was established in 1997 by two tax advisers, Eoin Kennelly and Kieran Twomey. By 2008 they had a team of 21 tax advisors advising private clients on all aspects of their tax affairs. "We chose to set up a fund at The Community Foundation for Ireland for a number of reasons. Firstly we want to support a number of community initiatives in a strategic manner, secondly if we are recommending The Foundation to clients we would like to have first-hand experience of their work, and finally working with The Foundation should simplify the process of giving and help us to assess the impact of our donations" said Eoin Kennelly, Director. Among those supported in 2008 were The Friends of The Elderly and Console.



Pictured at the Family Philanthropy Symposium in October are from l-r Niall O'Sullivan, The Community Foundation; Grant Gordon, The Institute for Family Business (UK); Avine McNally, Small Firms Association and Tina Roche, The Community Foundation

2009 Targets

Establish and promote
New Fund for
Marginalised Women

Increase Small Grants
Funding to €500,000

Launch new
Website

Investigate Potential for
New Thematic Funds

Continue to Develop a
Philanthropic Culture in
Ireland

Establish 10 new Donor
Advised Funds

Launch New
County Fund
Initiative

Grant Making

The Community Foundation provides an innovative mechanism for grant making. The Foundation finds and links donors with causes and projects of interest to them. Working closely with the donors and knowledge of the sectors informs this grant-making.

The Community Foundation generally makes grants from three areas:

1. Grants from Corporate Funds: Grants are disbursed on the basis of invited applications from the particular thematic causes or social groups identified by the donor. Employees are often involved in helping to decide which projects to be supported.
2. Grants from Donor-Advised Individual or Family Endowment Funds: Grants are made into areas the donors wish to support such as medical research or for specific geographic areas.
3. Funds where the Board has complete discretion over the grant-making. The Small Grants Programme is one such example. Grants are made from interest earned on donations that are pooled in the Endowment Fund for Ireland. These donations were made over a period of years (and continue to be made) as unrestricted funds for grant making purposes which are left to the discretion of the Board. The new Strategic Grants Programme and the Ray Murphy Fund are also in this category.

Small Grants Programme

During 2008, while the sectors supported under The Small Grants Programme remained broadly similar, greater focus was applied within these areas. The revised application criteria (summarised here) reflects this. While fewer grants were made in 2008, the overall amount granted in money terms was almost the same.

Applications, which are reviewed by an independent Grants Expert Panel, are welcome in three rounds per annum. Deadlines are included on the

Community Foundation's website, www.communityfoundation.ie

Applications must address one of six broadly-defined topics:

1. CARERS

Support for carers including actions such as the development of social networks, local respite initiatives.

2. OLDER PEOPLE

3 key areas: Outreach schemes which assist older people to join social groups and networks in their community. Projects promoting social contact for older isolated men. Groups working with older people through visitation/phone services.

3. FAMILIES AT RISK

Aimed at very vulnerable children. Indicators include substance misuse issues in the family setting, if they are in receipt of social work services, or in consistent poverty.

4. SEXUAL MINORITIES

Supports for sexual minorities, especially outreach projects to LGBT ethnic minorities and those in rural areas.

5. ETHNIC MINORITIES

Assisting the building of networks and structures for ethnic minorities, with a particular emphasis on Integration.

6. MENTAL HEALTH AND INTEGRATION

Community integration and supports for people who have had recent mental health difficulties.

The Ray Murphy Fund, established in honour of the long-time philanthropy advocate was established in 2008 and has made its first leadership grants.

Application criteria are also available online.

Examples of Grants

During 2008 hundreds of projects were funded through the Small Grants Programme. Here are a selection of just some of these great projects

“As someone who works closely with community and voluntary groups I see the impact that The Community Foundation small grants can have on organisations and their communities. €1,500 can provide an opportunity to develop a relevant and innovative set of responses to poverty and social exclusion at a local level and beyond. It can assist in creating options which motivate, encourage and affirm community groups as well as provide a passport to further funding options as it often helps new groups establish a track record in managing funding and implementing actions. Above all, The Community Foundation small grants are accessible, responsive to the needs of community groups and recognise the creativity in the sector in developing new responses to issues that other funds may not always encourage. The fund makes a real difference to groups but also to the communities they represent.”

Josephine Lally, Local and Community Development Consultant, Galway

Small Grants Programme

- **Meningitis Research Foundation:** A small grant of €800 was used to help increase awareness in the Polish community about vaccines for children that are considered standard in Ireland but not in Poland. This is a simple example of innovation.
- **Prisoners Families Infoline** is a free and confidential service for anyone who is affected by the imprisonment of a family member, partner or friend. A grant of €1,250 was made to provide helpline training to staff and volunteers. Prisoner families are often forgotten in the debate on crime and this helpline is proving an excellent resource.

- **Scoil Náisiunta Muire Na nGael, Louth:** When younger and older people mix the impact for both can be immense. A grant of €500 was made to help fund activities for an intergenerational project involving pupils who visit the elderly in a local home every three weeks.
- **Fatima Mansions Homework Club, Dublin:** A grant of €1,500 was made for a Literacy Programme targeting 43 children and young people who received an intensive programme working towards bringing their reading ages in line with their chronological reading age.

For a full list of grants made see: www.foundation.ie/grants/awarded.htm



Corporate Grants

The Business Objects Fund

In 2008 Business Objects, the largest business intelligence company in the world, (now part of SAP), with over 200 staff in Dublin established 'The Business Objects Fund' at The Community Foundation for Ireland.

Claire Gillissen-Duval from SAP outlines here the benefits of establishing the Fund:

In 2008, €12,500 was allocated from The Fund to three successful applicants. All are based in Dublin within an agreed catchment area. Fatima Regeneration Project - a group involved in the regeneration of Fatima Mansions, Our Lady of Victories Infant School in Ballymun and Familiscope - a Ballyfermot based organisation that develops services and programmes in response to identified community needs. They received grants that ranged from €2,500 to €6,000.

“ Since 2003 we have partnered with strong community foundation organisations throughout the world, to advise us on our local grant making which supports education for vulnerable children and youth. These include The Vancouver Foundation in Canada, Fondation de France in France, the Silicon Valley Community Foundation in the USA and The Berkshire Community Foundation for the UK. It has been a great pleasure to work with the Community Foundation for Ireland.

Sponsored by



We were amazed by the level of commitment, support and advice provided by this organisation throughout the grant process. Our contacts perfectly understood the object/mission of our corporate foundation, knew very well the charity network locally, therefore identified appropriate charities in the Dublin area that were willing to apply for funding. The Community Foundation then initiated the first contacts with them and even organised the visits for our employees who were involved in the granting process. They were strong advisors during our corporate decision making meeting and eventually communicated our decisions to the charities that had applied for funding.

If we had to rank the Community Foundation for Ireland amongst our other partners, they would certainly come among the first for all the reasons detailed before and for their high professionalism. We're now looking forward to working again with you for the next grant cycle! ”

Strategic Grants Programme

GLEN

The Gay and Lesbian Equality Network (GLEN) works to achieve full equality and inclusion for lesbian, gay and bisexual (LGB) people in Ireland, and protection from all forms of discrimination. The Community Foundation, informed by its experience of supporting LGBT groups, saw the need for a national approach to supporting local telephone helplines in a strategic and sustainable manner. It was decided to support GLEN, through a three year grant of up to €282,000, to 'professionalise' help lines in



Ireland. A new national 1850 line and supporting website will be established in 2009. One of the many expected impacts is in the area of youth suicide. The Community Foundation meets with GLEN every 6 months to review progress and results to date

and, subject to good progress continuing, grants for developing the project will continue to be paid until 2010. This security of funding is fundamental to the proper planning and development of such an important project.

Examples of Grants



The late Ray Murphy

Leadership Grants

The Ray Murphy Fund

In February, The Community Foundation established The Ray Murphy Fund. It was set up to assist and encourage managers within the community and voluntary sectors to access leadership education and training with the objective of helping to build leadership within the community sector. The Community Foundation will contribute €20,000 a year to the fund totalling €200,000 over 10 years.

The fund was named after the late Ray Murphy of The Mott Foundation, and formerly of Atlantic Philanthropies, to acknowledge the support he gave to both the philanthropic

sector and to the Community Foundation itself during his lifetime. One grant to Bodywhys (Eating Disorders Association of Ireland) was to enable the organisation to attend the International Initiative for Mental Health Leadership Exchange. A full list is available in the Grants section.

International Grants

SPPD Fund

After Paddy Doolan retired he was asked to mentor a growing Indian grassroots charity called The Society for Poor People Development (SPPD) and fundraise for them in Ireland and elsewhere. Its objective is to make access to education and health, food and shelter a reality for children living in rural parts of

Central Tamil Nadu in India. He looked at setting up an Irish registered charity but was put off by the red tape involved and the waiting time of two years before donors could give tax efficiently. The number of donors was expected to be limited and he didn't feel the scale of fundraising merited the setting up of a new organisation.

Paddy heard about The Community Foundation and soon afterwards, after due diligence on the part of The Foundation, The SPPD Fund was born in 2008. Among the benefits for Paddy are that The Community Foundation maintains the records (backed up daily on our database) of all donations to The SPPD Fund, completes the periodic transfers of monies to India, he doesn't need to undertake an audit as The Fund is part of The Community Foundation's



SPPD's objective is to make access to education and health, food and shelter a reality for children living in rural parts of Central Tamilnadu in India

overall audit and he can offer tax relief to Irish donors immediately. He can also offer tax relief immediately to donors to SPPD in a number of other European countries through Transnational Giving Europe, of which The Community Foundation is a member.



RADE (Recovery Through Art Drama and Education) provides drumming workshops for people recovering from addiction.



Mayfield CDP project to encourage healthy eating and to provide 12 cookery classes for a men's group.



Defibrillator training course in County Monaghan.

Co. Monaghan Fund

Course for Community Based Defibrillator

The County Monaghan Fund was approached by a number of Community Groups who had purchased Defibrillators to help out with the cost of the necessary ongoing training associated with them. It is recommended that team members do refresher courses every three months to retain the skills learned on the initial training course. After careful consideration of the situation, it was decided that the best long term answer was to train trainers in each group who in turn would train their own members as required and also pay for the equipment required.

The first group of 10 were trained in 2007 in Ballybay Community Centre. The second Defibrillator training course took place in November 2008 with 19 instructors trained.

It has turned out to be a really successful project as the people trained to do the ongoing retraining of their own groups have since, on a voluntary basis, formed themselves into teams who are training new groups in neighbouring parishes. Over 200 people have been trained to date and blanket coverage of the County is expected over the next few years.

Donor Funds

The following grants were made from funds established by individuals, families and companies. Some donors structured their philanthropy as one-off funding or as flow-through funding while others chose to make grants from permanent endowments. In the following cases, a number of donors opted for anonymity.

Ardiff Family Fund

James's Street Secondary	To co-fund a mentoring programme for first year students	€800.00
--------------------------	--	---------

Ballynew Fund

Concern	Donation for Liberia appeal	€1,000.00
Irish Hospice Foundation		€1,000.00
Vita		€1,500.00
Ethiopiaid		€1,500.00
Trocaire	Donation for Congo appeal	€1,500.00
Dublin Simon Community		€1,500.00
Fisherman Award		€5,605.00
Trocaire	Donation towards Somalia appeal	€2,500.00
Peter McVerry Trust		€2,000.00
		€18,105.00

BT Ireland Fund

Concern	Donation from BT Ireland Payroll Giving Scheme	€644.00
Aware	Donation from BT Ireland Payroll Giving Scheme	€700.00
Barnardos	Donation from BT Ireland Payroll Giving Scheme	€520.00
Bothar	Donation from BT Ireland Payroll Giving Scheme	€150.00
Enable Ireland	Donation from BT Ireland Payroll Giving Scheme	€840.00
Focus Ireland	Donation from BT Ireland Payroll Giving Scheme	€420.00
Irish Cancer Society	Donation from BT Ireland Payroll Giving Scheme	€830.00
The Jack and Jill Children's Foundation	Donation from BT Ireland Payroll Giving Scheme	€90.00
Make a Wish	Donation from BT Ireland Payroll Giving Scheme	€708.00
Children's Medical and Research Foundation	Donation from BT Ireland Payroll Giving Scheme	€1,560.00
Simon Communities of Ireland	Donation from BT Ireland Payroll Giving Scheme	€1,624.00
Friends of St Lukes	Donation from BT Ireland Payroll Giving Scheme	€170.00
Temple Street Children's University Hospital	Donation from BT Ireland Payroll Giving Scheme	€470.00
		€21,226.00

Business Objects Fund

Familiscope Ltd	You make the Difference' programme for parents and children	€4,000.00
Fatima Regeneration Board	Fatima Literacy Project for children of school-going age	€6,000.00
Our Lady of Victories BNS	To purchase an Interactive whiteboard for a class of 24 pupils	€2,500.00
		€12,500.00

Callery Family Fund

Strokestown Poetry Festival		€8,000.00
Creeve Defibrillator Fund		€1,700.00
O'Carolan Harp and Musical Festival		€500.00
		€10,200.00

Dr Alison Byrne Fund

Meningitis Research Foundation	To develop 'Help and Support', a reference guide for people affected by meningitis and septicaemia	€1,200.00
Alzheimer Society of Ireland	To employ an art tutor to do art and craft activities with 12 clients over 30 sessions	€1,860.00
		€3,060.00

eBay Foundation

Irish Hospice Foundation	In recognition of eBay employees in Dublin who raised funds for the organisation	€300.00
MS Ireland	In recognition of eBay employees in Dublin who raised funds for the organisation	€375.00
Barnardos	In recognition of eBay employees in Dublin who raised funds for the organisation	€525.00
Barretstown	As part of the 2007 employee gift matching programme	€500.00
Concern	As part of the 2007 employee gift matching programme	€525.00
Irish Cancer Society	As part of the 2007 employee gift matching programme	€150.00
Trocaire	As part of the 2007 employee gift matching programme	€210.00
GOAL Ireland	In recognition of an employee who participated in Global Citizenship promotion which encouraged employees to further engage in charity	€1,700.00
		€4,285.00

Fedex Ireland Fund

St Michaels House	Towards social activities for service users	€606.60
The Allsorts Club	To purchase new uniforms	€606.60
Spina Bifida and Hydrocephalus	Donation for a social activity	€396.00
Baldoyle Family Resource Services Ltd	Donation towards Mental Health programme	€396.00
Rape Crisis Midwest	Donation for general costs	€396.00
Shannon Family Resource Centre Ltd	For two social outings for the Le Cheile International Club to broaden experience, develop social skills and form further networks	€606.60
		€3,007.80

Johnson & Johnson

To fund 6 scholarships during 2008	€66,736.54
------------------------------------	------------

Kennelly & Twomey Fund

Friends of The Elderly	€5,000.00
Focus Ireland	€5,000.00
Console	€5,000.00
Brendanville FC	€2,000.00
thisisnotashop Arts project	€2,000.00
	€19,000.00

Kili Scholarship Fund

Kili Project Tanzania	€90.00
-----------------------	--------

LFG Family Fund

An Cosán	Family Learning and Support Programme	€9,575.00
St Louise's Senior Primary School	Literacy programme for 10, 11, and 12 year olds	€5,031.00
Project Danztheatre Company DBA Chicago Danztheatre-LITA		€5,000.00
St Vincent de Paul		€10,000.00
Catenian Association		€4,000.00
Koru Foundation		€3,000.00
		€36,606.00

Monaghan Fund

McElroy Awards and Signage	Perpetual trophy for enterprise project	€105.00
Carrick CPR	Defibrillator Training Course	€6,203.50
		€6,308.50

Neil, Anne-Marie, Lisa-Jane and Louise Fund

South West Kerry Family Resource Centre Ltd	To develop a network and activities where 80+ isolated male senior citizens would be supported to continue their communication links with other men	€400.00
---	---	---------

Ray Murphy Fund

Open Heart House	PSM course in Leadership - Developing Human Capital	€795.00
Open Heart House	PSM course in Leadership - Developing Human Capital	€795.00
Media Forum	Structured Mentorship Programme	€2,700.00
Bodywhys-Eating Disorders Association of Ireland	To attend the International Initiative for Mental Health Leadership Exchange due to be held in Brisbane in March 2009	€3,400.00
One World Centre Galway	The Wheel Stronger Leaders Programme	€925.00
Carlow Volunteer Centre	The Wheel Stronger Leaders Programme	€925.00
		€9,540.00

SPPD Ireland Fund

Society for Poor People Development, India	Core costs support	€5,000.00
--	--------------------	-----------

Tarmon Fund

Muscular Dystrophy Ireland		€10,000.00
Amnesty International Irish section		€2,000.00
Irish Sri Lankan Orphanage Fund		€10,000.00
		€22,000.00

Xilinx Community Fund

Hope Foundation	Sustain Education and Healthcare projects in Calcutta for street children and their families	€750.00
Irish Blue Cross	To provide for new veterinary clinic for pet welfare	€750.00
Crosscare	Provide meals-on-wheels delivery service to the ill and infirm	€750.00
Bray Women's Refuge	To help provide welcome packs for young children who are living in the shelter	€750.00
Dublin Rape Crisis Centre	To support the ongoing services of the centre	€800.00
Headstrong	To fund the Jigsaw project based in Galway	€750.00
R N L I	To support the ongoing work of the RNLI	€750.00
Irish Kidney Association	To support the provisions of services to those on home dialysis	€750.00
DCU Educational Trust	Support for the next academic year for the two students in the DCU access program supported by Xilinx	€4,000.00
Alzheimer Society of Ireland	To support the ongoing work of the society	€750.00
Irish Society for the Prevention of Cruelty to Children	To support Childline	€750.00
Temple Street Children's University Hospital	To support the ongoing work of the hospital	€750.00
Talbot Senior National School	Eco-system grant for the 2007/08 academic year	€18,597.00
Talbot Senior National School	Eco-system grant for Science & Technology project	€3,719.00
Salesian Sisters	Eco-system grant for Community and Social project	€3,719.00
Clondalkin Youth Service	Eco-system grant for Literary project	€3,719.00
Abbey India Project	Eco-system grant for Literary project	€3,719.00
Focus Ireland	Xilinx Hitchhikers Four Peaks Challenge Fund	€2,226.00
C.A.L.M.A.S.T. (Centre for the Advancement of Learning of Maths, Science & Technology)	To support Maths Week Ireland	€5,000.00
Institute of Technology Tallaght	To support the ITT reward programme for engineering students	€1,000.00
		€50,874.00

Anonymous Donor Funds

St Catherine's College Oxford	To endow two Undergraduate Foundation Scholarships at St Catherine's College, Oxford	€38,400.00
Sonairte	To support the development of Sonairte, The National Ecology Centre	€131,982.00
Children's Educational Development Fund		€45,000.00
Waterville Fisheries Development Group	To support community initiative to keep lake and associated waterways pollution free	€17,100.00

Community Foundation Grants

Strategic Grants

Strategic Grants tend to be larger in scale and can be multi-annual. Prospective recipients are identified by The Foundation.

OPEN - Representing Lone Parent Groups in Ireland	Support for 'Strengthening Families, Strengthening Communities' an innovative training programme	€50,000.00
Gay and Lesbian Equality Network (GLEN)	Strategic Grant for National Helpline for Gay, Lesbian, Bisexual and Transgender people	€81,464.00

Small Grants Programme

These grants are made on the basis of earnings from funds that are pooled in the Endowment Fund for Ireland. They typically range in size from €500 to a maximum of €5,000.

Carers			
Eiri Corca Boiscinn	Clare	Respite weekend for carers	€2,000.00
Ciunas	Clare	Social event for carers	€700.00
Caring for Carers East Clare	Clare	Respite day for carers	€450.00
Duhallow Carers Network	Cork	Stress management workshops	€1,000.00
The Carers Association	Cork	Respite for family carers	€1,250.00
Midleton Community Forum	Cork	Courses for carers group	€500.00
Cork Family Carers Forum	Cork	Respite for families	€1,950.00
Buncrana Carers Group	Donegal	Respite break for carers	€1,000.00
Inch Island Community Association	Donegal	Wellbeing day for family carers	€500.00
Inishowen Carers Support Group	Donegal	Social activity for carers	€300.00
Rosses Community Development Project	Donegal	Social activities for carers	€500.00

Tir Boghaine Teo	Donegal	Stress management for carers	€1,000.00
Donegal Carers Association Ltd	Donegal	Respite break for carers	€2,000.00
Moville Men's Group	Donegal	Male carers group	€1,000.00
The Carers Association	Dublin	Respite for family carers	€1,250.00
Debra Ireland	Dublin	Respite for families	€500.00
The Carers Association	Dublin	Respite for family carers	€1,250.00
The Carers Association	Dublin	Respite for family carers	€1,000.00
Muscular Dystrophy Ireland	Dublin	Summer camps for MD sufferers and their carers	€2,500.00
C A S A	Dublin	Respite breaks for people with special needs	€1,800.00
Huntington's Disease Association of Ireland (HDAI)	Dublin	Activities for young carers of those with Huntington's Disease	€2,000.00
Schizophrenia Ireland-Lucia Foundation	Dublin	Respite break for carers	€1,500.00
Muscular Dystrophy Ireland	Dublin	Respite for family carers	€2,000.00
The Irish Motor Neurone Disease Association	Dublin	Respite break for carers	€1,500.00
St John of God Menni Services	Dublin	Summer camp providing respite	€500.00
North West Connemara Carers Group	Galway	Craft workshops for carers	€500.00
Nano Nagle Summer Camp	Kerry	Respite for families of children with special needs	€1,000.00
The Carers Association	Kerry	Respite for family carers	€1,250.00
The Carers Association	Laois	Respite for family carers	€2,500.00
Caring For Carers Limerick	Limerick	Respite for carers	€2,000.00
Ballina Carers Support Group	Mayo	Cookery course for carers	€1,000.00
Cavan Monaghan Carers	Monaghan	Respite break for carers	€500.00
Ceara Women's Group	Monaghan	Respite day for carers	€1,000.00
Clara Carers Support Group	Offaly	Respite break	€2,000.00
The Carers Association	Sligo	Respite for family carers	€2,000.00
Thurles Carers Support Group	Tipperary	Respite day for carers	€750.00
Thurles Action for Community Development Ltd	Tipperary	Self Care Programme for carers	€600.00
The Carers Association	Waterford	Respite for family carers	€1,250.00
Athlone Carers Support Group	Westmeath	Respite break for carers	€500.00
The Carers Association	Wexford	Respite for family carers	€1,250.00
FAB Community Development Project	Wexford	Respite break for carers	€1,087.80
The Carers Association	Wicklow	Respite for family carers	€1,500.00
			€50,637.80

Ethnic Minorities

St Catherine's Community Services Centre	Carlow	English classes for immigrants	€800.00
Cobh Family Resource Centre	Cork	Translation facilities and interpreters	€500.00
Le Chéile Millstreet	Cork	International Table Quiz	€475.00
Moville Men's Group	Donegal	Social evenings for ethnic minorities	€1,000.00
Donegal Parenting Group	Donegal	English language course for immigrant parents	€700.00
Donegal Town Asylum Seekers and Refugee Support Group	Donegal	English language classes	€650.00
Donegal Failte Project	Donegal	Guided 'Integration walks' in community	€800.00
Inishowen Development Partnership	Donegal	Photography project for ethnic minorities	€750.00
Friends of The Elderly	Dublin	Weekly music sessions with the Bolton Street band	€600.00
AkiDWA	Dublin	Training to women asylum seekers	€1,000.00
Meningitis Research Foundation	Dublin	Factsheet for new communities	€800.00
Voluntary Service International (VSI)	Dublin	Summer camp for asylum seeker children	€1,000.00
ATD Fourth World	Dublin	Children's Community Friendship Project	€1,500.00
Friends of The Elderly	Dublin	Social event	€250.00
Integrated Women of D12 Group	Dublin	Integrated training mornings for ethnic minority women	€500.00
Hindu Cultural Centre	Dublin	Seed funding for group	€500.00
Dun Laoghaire Refugee Project	Dublin	Education project for young asylum seekers	€1,000.00
Romanian Community of Ireland	Dublin	Information sessions for new immigrants	€1,500.00
Immigrant Council of Ireland, National	Dublin	Promotion of civic participation	€2,500.00
Integrating Ireland	Dublin	Targeted training and facilitation for emerging immigrant organisations	€2,300.00
Equal Access CDP Tallaght Ltd	Dublin	Equality in work practices seminar	€600.00
Threshold	Dublin	Outreach work with the Polish community	€1,000.00
Insaka - All Africa Youth Movement	Dublin	Residential youth assembly	€1,500.00
Threshold	Dublin	Outreach work for ethnic minorities	€1,000.00
Show Racism the Red Card	Dublin	Community support project	€2,000.00
Spirasi	Dublin	Civic Training Programme for immigrants	€2,500.00
Lifeline Africa Foundation	Dublin	Schools integration project	€2,500.00
Ballinasloe Social Services	Galway	English classes and activities for immigrants	€1,000.00
Spirit Centre	Galway	Health and wellbeing course for asylum seekers	€750.00
Reap The Runway	Galway	Fashion show for direct provision residents	€1,000.00
The Western Traveller and Intercultural Association	Galway	Social outing	€370.00
Galway Congolese Association	Galway	Intercultural exhibition	€2,000.00
Killarney Asylum Seekers Initiative	Kerry	Language training for immigrants	€900.00
North Kerry Together Ltd	Kerry	Social group for immigrants	€1,000.00
Kildare EU Club	Kildare	Multicultural chess championship	€1,000.00
Galway Refugee Support Group	Leitrim	Home management course for former asylum seekers	€800.00

Doras Luimni Development Organisation for Refugees and Asylum Seekers	Limerick	World witness community festival for ethnic minority groups	€2,000.00
Doras Luimni Development Organisation for Refugees and Asylum Seekers	Limerick	World Witness Book Club	€1,000.00
Acorn Community Development Project Ltd	Longford	Training for diverse management committee	€1,500.00
Mayo Intercultural Action (MIA)	Mayo	Multicultural puppet show for schools	€1,000.00
Mayo Rape Crisis Centre	Mayo	Training for direct provision residents	€1,000.00
Mayo Intercultural Action (MIA)	Mayo	Capacity building/ leadership training for asylum seekers	€1,000.00
Kells Peoples Resource Centre	Meath	Development of ethnic minority women's group	€1,000.00
Irish Country Womens Association	Meath	Open day for non Irish women	€1,000.00
Vita House Family Centre	Roscommon	Integration strategy for immigrant youths	€1,000.00
Easkey Family Resource Centre	Roscommon	Workshop for asylum seekers and refugees	€1,500.00
Tubbercurry Family and Childcare Resource Centre	Sligo	Multicultural family fair day	€1,000.00
Diversity Sligo	Sligo	Computer classes for asylum seekers	€800.00
Domestic Violence Advocacy Service	Sligo	Awareness raising among immigrant women	€1,000.00
Edmund Rice International Heritage Centre Ltd	Waterford	To conduct an English language strategy	€1,500.00
Viking House Residents Committee	Waterford	First aid course	€500.00
New Ross Intercultural Group	Wexford	Multi ethnic soccer tournament	€700.00
Arklow Community Enterprise Ltd (ACE)	Wicklow	Integration project for school children	€1,000.00
			€57,545.00

Families At Risk

MOVE	Cork	Pilot research project into men and domestic violence	€1,000.00
Sli Eile Housing Association	Cork	Horticulture programme for service users	€2,000.00
Ballincollig Action Project	Cork	'Family Communications' course	€750.00
Inishowen Womens Outreach	Donegal	Training for helpline volunteers	€1,000.00
ACET in Ireland Ltd. Dublin	Dublin	Volunteer training weekend as part of a mentoring programme for high risk children and youth	€1,000.00
Vincentian Housing Partnership	Dublin	Activities for homeless clients	€500.00
Matt Talbot Community Trust	Dublin	Art and music workshops	€700.00
St Dominics Secondary School	Dublin	Residential training for 20 peer mediator facilitators	€3,000.00
Coolmine Therapeutic Community	Dublin	Horticultural programme	€2,000.00
Deansrath Family Centre	Dublin	Therapeutic programme for marginalised children	€2,000.00
Saoirse Housing Association Ltd	Dublin	Personal development project for women and children	€1,000.00
Prisoners Families Infoline	Dublin	Helpline training for staff and volunteers	€1,250.00
Parentline	Dublin	Volunteer outreach community talks	€1,000.00
An Siol Community Development Project Dublin	Dublin	Social events	€1,420.00
James's Street Secondary	Dublin	Mentoring programme for first year students	€1,000.00
Fatima Mansions Homework Club	Dublin	Fatima Literacy Programme targeting 43 children	€1,500.00
RADE Ltd	Dublin	Drumming workshops for people recovering from addiction	€1,000.00

Ballymun Arts & Community Resource Centre t/a Axis	Dublin	Social events	€666.00
Community Mediation Works Ltd.	Dublin	Training in restorative justice for people from disadvantaged areas	€2,500.00
Galway Diocesan Youth Services	Galway	Outreach project for homeless people	€1,200.00
Aonad Resource Centre	Galway	Cleaning/gardening scheme run by volunteers	€500.00
Ballybane & Mervue Community Development Project	Galway	Father & Sons canoe building project	€1,000.00
Domestic Violence Response Ltd	Galway	Social activities for women and children	€500.00
Cope Waterside House	Galway	Music therapy for children	€1,000.00
Clann Family Resource Centre	Galway	Train and recruit phonline volunteers	€1,000.00
Sean Chairde	Kerry	Arts and crafts exhibition day	€600.00
South West Kerry Family Resource Centre Ltd	Kerry	Support project for lone parents	€1,500.00
Kilkenny City Garda Youth Diversion Project	Kilkenny	Psychotherapy support for families	€1,000.00
Leitrim Youth Project	Leitrim	Outdoor education project for young males	€2,000.00
Bedford Row Family Project	Limerick	Men's group for ex-prisoners	€800.00
Bedford Row Family Project	Limerick	Activities for the Women's Social Club	€1,200.00
Club Vario Youth Project	Mayo	Mentoring programme	€1,000.00
Iorras Le Cheile	Mayo	Personal Development Programme for women	€1,000.00
Youth Work Ireland	Roscommon	Youth horticultural project	€2,000.00
Youth Work Ireland	Roscommon	Anger Control Training for young people	€2,000.00
Castlebridge Community Development Co-operative	Wexford	Personal development programme for young offenders	€1,000.00
			€43,786.00

Mental Health

IRD Duhallow	Cork	Employment training	€2,000.00
Donegal Garden GNOMES	Donegal	Gardening and cookery programme	€700.00
Cabra Community Development Project	Dublin	Community Gardening Project	€350.00
EVE Ltd Thomas Street	Dublin	Development of tool to aid mental health recovery	€4,750.00
Platinum Clubhouse	Kildare	Personal development classes for service users	€1,000.00
EVE Ltd Harvest Centre	Kildare	Art classes for clients	€800.00
EVE Ltd Harvest Centre	Kildare	Advocacy training programme	€1,000.00
Hearing Voices Ireland	Limerick	Self help classes for those with mental health problems	€1,500.00
Harbour Group at Marian Hostel	Offaly	Computer classes for residents	€2,000.00
Avalon Centre (formerly St Anne's)	Sligo	Dance workshops	€700.00
			€14,800.00

Older People

Bagenalstown Family Resource Centre	Carlow	Older Rural Men's Craft Club	€1,000.00
South West Cavan Elderly Networking Group	Cavan	Introductory computer course	€1,000.00
Community Connections CDP	Cavan	Transport for older people's activities	€600.00
Positive Age	Cavan	Dance lessons	€600.00
Positive Age	Cavan	Volunteer recruitment and training	€2,500.00
Going Strong Club ARA	Clare	Social outing for older people	€600.00
West Clare Family Resource Centre	Clare	Information seminar for older people	€500.00
Raheen Hospital Day Care Centre	Clare	Reminiscence workshops	€1,000.00
Quin Clooney Senior Citizens	Clare	Social outings	€740.00
Obair Newmarket-On-Fergus Ltd	Clare	Social outing	€1,735.30
Killeagh Inch Monday Club	Cork	Crafts course for older people	€600.00
St Mary's Senior Citizens Knocknaheeny Hollyhill Ltd	Cork	Social activities for older people	€600.00
Blackpool over 60's Group	Cork	Social outings for the elderly	€600.00
Respond Day Care Centre	Cork	Activities for older clients	€600.00
Ballyporeen Community Council	Cork	Social outing for older people	€500.00
Lehanmore Community Co-operative Society Ltd	Cork	Social activities for older people	€600.00
Lehanmore Community Co-operative Society Ltd	Cork	Intergenerational project	€1,000.00
Retired People's Network	Cork	Activities for older people	€600.00
Araglen Carnival Committee	Cork	Activities and social event for older people	€600.00
Glanmire Senior Citizens	Cork	Activities	€600.00
Mahon Community Development Project	Cork	Activities for older people	€400.00
Mahon Family Resource Centre Ltd.	Cork	Intergenerational project	€1,000.00
Blackwater Community Connect	Cork	Information days	€555.00
Mayfield Community Development Project Ltd	Cork	Cookery lessons for the men's group	€500.00
Nimble Fingers	Cork	Craft classes for older people	€814.00
St Brendan's The Glen Senior Citizens Ltd	Cork	Social activities	€721.50
Active Seniors	Donegal	Social networking project for older people	€600.00
Ballyshannon Active Retirement Group	Donegal	Activities for older people	€600.00
Inch Island Community Association	Donegal	Storytelling sessions for the elderly	€600.00
Dunkineely Active Age Group	Donegal	Craft classes	€600.00
Active Retirement Association Carndonagh	Donegal	Social outings	€600.00
50+ Activity Club	Donegal	Activities for older people	€600.00
Donegal Active Retirement Association	Donegal	Social activities for older people	€600.00
Carrick Active Age Group	Donegal	Activities for older people	€600.00
Serenity Active Retirement Association	Donegal	Creative writing course	€600.00
Active Retirement Ireland	Donegal	Social activities	€600.00
Adopt - Care of the Aged	Donegal	Social event for older people	€600.00

The Dunfanaghy Workhouse	Donegal	Art classes for older people	€600.00
Moville and District Mental Health Association	Donegal	Craft classes for older people	€500.00
Ballyshannon Mental Health Association	Donegal	Social and educational activities	€500.00
Tír Boghaine Teo	Donegal	Intergenerational event	€500.00
Kerrykeel Senior Citizens	Donegal	Social event	€555.00
Bundoran Active Age Club	Donegal	Social activities	€555.00
Active Seniors	Donegal	Activities	€740.00
Donegal Family Resource Centre	Donegal	Social activity for men	€800.00
Henrietta Adult and Community Education Service	Dublin	Crafts club for older people	€600.00
Sarsfield House Day Centre	Dublin	Social outing	€398.12
Bluebell Community Development Project Ltd.	Dublin	Yoga classes for older people	€600.00
Baldoyle Family Resource Services Ltd	Dublin	Personal development for older women	€600.00
Mulhuddart Senior Citizen's Group	Dublin	Outings for the group	€600.00
Evergreens Senior Citizens Club	Dublin	Social outing	€740.00
Mulhuddart Senior Citizen's Group	Dublin	Social activities	€740.00
Age Action Ireland	Dublin	Oral history project	€1,000.00
Golden Wonders Club	Dublin	Social outings and activities	€1,091.50
Bawnogue Women's Development Group	Dublin	To set up an outreach meals on wheels service	€1,950.00
Crosscare	Dublin	Social outing	€300.00
St Patrick's Ladies Club	Dublin	Pottery and art classes	€296.00
KARE	Dublin	Pilot home visitation scheme for older people	€2,000.00
Edenmore Community Development Project	Dublin	Creation of community comic book by older men	€1,500.00
Active Senior IT Society	Dublin	Digital photography course	€500.00
Friendly Call Local Committee Cabra	Dublin	Social events for older people	€600.00
Rialto Day Care Centre	Dublin	Social activities	€500.00
Robert Emmet Community Development Project	Dublin	Tai chi classes for older people	€400.00
Older Women's Network	Dublin	Social event	€555.00
Friends of Lusk Community Unit	Dublin	To make an armchair based exercise dvd	€1,700.00
Ballybrack Community Development Project	Dublin	Art classes for older people	€703.00
All Ireland Open Dancing Championships	Galway	Dance lessons for older people	€1,000.00
Comhlacht Forbartha an Spideal Teoranta	Galway	Social event for the elderly	€600.00
Clann Family Resource Centre	Galway	Intergenerational drama/ storytelling project	€700.00
COPE - Sonas Day Centre	Galway	Cookery and nutrition classes	€600.00
COPE - Sonas Day Centre	Galway	Social outings	€600.00
COPE - Sonas Day Centre	Galway	Exercise classes	€960.00
Tearmann Eanna Teo	Galway	Social activities	€500.00
Generations In Action	Galway	Intergenerational art project	€500.00
COPE - Sonas Day Centre	Galway	Storytelling project for older clients	€250.00
Comhairle Muintir an Chaisil Teoranta	Galway	Social outings for older people	€444.00

Glinsk Ladies Club	Galway	Social outing	€370.00
Golden Years Club	Galway	Social outing	€370.00
Ballyconneely Senior Citizens Group	Galway	Social outing	€300.00
COPE - Sonas Day Centre	Galway	Pottery classes for older people	€925.00
COPE - Sonas Day Centre	Galway	Art and craft classes for older people	€555.00
COPE - Sonas Day Centre	Galway	Social outings	€740.00
Sliabh Luachra Active Retired Network	Kerry	Annual gala tea dance	€600.00
Knocknagoshel Womens Group Over 55 Club	Kerry	Social activities for older people	€600.00
IRD Foilmore - Kells Co Ltd	Kerry	Art classes for older people	€600.00
Castlemaine Family resource Centre Ltd	Kerry	Elderly visitation service	€500.00
Probus Ladies 99 Club	Kerry	Tai chi classes	€500.00
Ballymacelligott Active Retirement Association	Kerry	Social activities	€500.00
Kerry Counselling Centre	Kerry	Reminiscent therapy groupwork project	€500.00
Ballybunion Active Retirement Group	Kerry	Social outing	€555.00
Tralee Probus Club 97	Kerry	Social outings	€500.00
Ballymacelligott Womens Group	Kerry	Social outing	€203.50
Castleisland Active Retirement Group	Kerry	Social outing	€444.00
Samhlaiocht Chiarrai Teoranta	Kerry	Films and workshops for older people	€666.00
Castlemaine Family resource Centre Ltd	Kerry	Elderly home visitation scheme	€3,000.00
The Crafty People	Kildare	Arts and crafts for older people	€600.00
Naas General Hospital Arts Committee	Kildare	Intergenerational workshop for older patients	€500.00
Kilkenny Recreation and Sports Partnership	Kilkenny	Information days	€1,500.00
Loughboy Community Development Project	Kilkenny	Digital photography programme	€500.00
Kilkenny Older People's Network (KOPN)	Kilkenny	Awareness raising for volunteer visiting programme	€500.00
Kilkenny Contact	Kilkenny	Promotion of service	€500.00
Annaduff Drumsna Golden Age Group	Leitrim	Community arts programme	€600.00
Carrigallen/ Drumeela Active Age	Leitrim	Yoga classes and bowling	€600.00
Carrigallen/ Drumeela Active Age	Leitrim	Social outing	€740.00
Patrickswell Friday Club	Limerick	Social outings for older people	€600.00
Thursday Club ARA Clarina	Limerick	Painting classes for older people	€500.00
Our Lady of Lourdes Community Services Group	Limerick	Social outing for older people	€600.00
Southill Family Resource Centre	Limerick	Social activity	€1,480.00
North Tipperary Community and Voluntary Association CAVA	Limerick	Information evening	€500.00
Patrickswell Friday Club	Limerick	Art classes for older people	€370.00
Harmony House Community Centre	Longford	Social event for older people	€370.00
Monaduff Social Club	Longford	Social event for older people	€636.40
St Oliver Plunkett Hospital	Louth	Falls prevention programme for older people	€1,000.00
Scoil Naisiunta Muire Na nGael	Louth	Intergenerational project	€500.00

Drogheda Senior Citizens Interest Group	Louth	'Ageing with Confidence' programme	€2,000.00
Ardee Active Retirement	Louth	Befriending and visitation project	€2,000.00
Scoil Naisiunta Muire Na nGael	Louth	Intergenerational visitation project	€800.00
St Oliver Plunkett Hospital	Louth	Music project	€600.00
Mayo Abbey Community Social Services Group	Mayo	Art workshops for older people	€600.00
Tuesday Club - Kiltimagh ARA	Mayo	Reminiscence project for the elderly	€600.00
Cosgallen East Mayo CDP	Mayo	Day centre activities for the elderly	€600.00
Kilmovee Family Resource Centre	Mayo	Needs analysis of older people	€750.00
Cairde le Cheile	Mayo	Craft classes for older people	€600.00
Cairde le Cheile	Mayo	Sports activities	€600.00
Aghamore Voluntary Housing Association (VHA)	Mayo	Volunteer visiting for older people	€400.00
Ballyglass Community Council Co Ltd	Mayo	Intergenerational project	€500.00
St Colman's Care Centre	Mayo	Healthy Ageing Day for older people	€500.00
Friendship Support Group	Mayo	Social activities	€500.00
Curam Family Support	Mayo	Social outing	€370.00
Claremorris Family Resource Centre Ltd	Mayo	Intergenerational art project	€370.00
Clar IRD	Mayo	Set up of telephone befriending service	€2,500.00
Ballyhaunis Social Housing Ltd.	Mayo	Social outing for older people	€500.00
Cairde le Cheile	Mayo	Organic gardening programme	€700.00
Mulranny Day Centre Housing Ltd	Mayo	To set up a friendly call service	€2,000.00
Kilmovee Family Resource Centre	Mayo	Art classes for older people	€400.00
Third Age Foundation	Meath	Performance tour of the combined choral group	€750.00
Third Age Foundation	Meath	Tutor's Manual for Fáilte Isteach project	€1,000.00
Meath Local Sports Partnership	Meath	First aid training for older men	€1,000.00
St Vincent de Paul Kilmore & Drumsnatt Conference	Monaghan	Social activities for older people	€340.00
Arden View Community @ Family Resource Centre	Offaly	Activities for older people	€600.00
Clara Women's Group	Offaly	Social outing	€300.00
Clara Community & Family Resource Centre Ltd	Offaly	Intergenerational project	€500.00
Edenderry Community Development Project (PEAT)	Offaly	Physical activities for the elderly	€500.00
Irish Country Womens Association	Offaly	Social outing	€370.00
Co Roscommon Disability Support Group Ltd	Roscommon	Yoga classes for older members	€600.00
Aughrim Kilmore Active Retired	Roscommon	Activities for older people	€600.00
North West Roscommon CDP	Roscommon	Activities for active age group	€600.00
Breifne U3A	Roscommon	Start-up costs for older people's group	€500.00
Elphin Day Care Centre	Roscommon	Social outing	€740.00
Roscommon Partnership Company	Roscommon	Social outings for older men	€1,202.50
Young At Heart Active Age Club	Sligo	Activities for older people	€600.00
Active Retirement Ireland	Sligo	Training for regional committee members	€1,000.00

St Michael's Family Life Centre	Sligo	'Pilates for Seniors' course	€300.00
Monday Club Gleann Active Retirement	Sligo	Basket making course	€180.00
Club 66 Senior Citizens Social Group	Tipperary	Activities	€600.00
Clonmel Older People's Steering Group	Tipperary	Information day	€600.00
Holycross Art Initiative Group	Tipperary	Reminiscence therapy for older people	€400.00
Millennium Family Resource Centre Ltd	Tipperary	Outreach visitation to older isolated men	€1,000.00
Irish Country Womens Association	Tipperary	Travelling art exhibition	€1,110.00
Athlone Community Radio Ltd	Westmeath	Radio training for older people	€1,200.00
South West Wexford Community Development Group	Wexford	Lace making project for older women	€1,400.00
South West Wexford Community Development Group	Wexford	Crafts classes for older women	€600.00
Poulpeasty Active Retirement	Wexford	Social outing	€600.00
Kilrane/ Rosslare Harbour Active Retirement Association	Wexford	Art classes for older people	€600.00
Widows Group	Wexford	Social outing	€370.00
Bray Cancer Support & Information Centre	Wicklow	Workshops for older clients	€600.00
Serendipity Theatre Group	Wicklow	Production of play in nursing homes	€980.00
Arklow Men's Group	Wicklow	Social activities	€1,000.00
Patient Comfort Fund Wicklow District Hospital	Wicklow	Physical activities	€360.00
Friends of the Orchard Welfare Home	Wicklow	Art classes for older residents	€370.00
			€121,830.82

Sexual Minorities

Bandon Family Support Group	Cork	LGBT training for management committee	€600.00
L.Inc.	Cork	Sexual orientation awareness training	€3,000.00
Transgender Equality Network Ireland	Dublin	Health promotion weekend	€1,500.00
ALAF	Dublin	Visual arts project	€1,000.00
Belong To Dublin	Dublin	Participation in Galway Pride event	€1,000.00
LGBT Noise	Dublin	To host a Forum on Activism	€500.00
The Irish Council For Civil Liberties	Dublin	Equality for All Families Campaign	€2,000.00
International Dublin Gay Theatre Festival	Dublin	Annual networking event	€1,500.00
Galway Gay Helpline	Galway	Training for helpline volunteers	€1,500.00
Network of Family Resource Centres Supporting LGBT Communities	Galway	Training for centres on LGBT issues	€2,500.00
North Kerry LGBT Support Group	Kerry	Local workshops/ training day	€1,000.00
Kerry Gay and Lesbian Project	Kerry	Volunteer training	€900.00
Athy GLB	Kildare	Capacity building	€1,000.00
LGBT Pride Northwest	Leitrim	Annual social event	€1,200.00
Rainbow Support Services Ltd	Limerick	Booklet for LGBT youth	€500.00

€19,700.00

Various

Legacy Promotion Ireland	Dublin	National public awareness campaign to raise awareness of legacies as a means of donating to charity	€10,000.00
Media Forum	Dublin	Convening of stakeholders in media literacy	€800.00
Aimsir Bia/ Digging Deep	Tipperary	Community food garden	€500.00
			€11,300.00

Health/ Disability

Special Needs Active Parents	Cavan	Social event for families of children with special needs	€700.00
Radio Corca Baiscinn	Clare	Outreach programme for volunteers with special needs	€2,000.00
Cork Deaf Association	Cork	Pilot social networking programme	€1,500.00
Ballyshannon Folk & Traditional Music Festival	Donegal	Access for people with disabilities	€500.00
The Allsorts Club	Dublin	Activities for children with special needs	€600.00
Spina Bifida and Hydrocephalus	Dublin	Life skills training course	€500.00
Irish Red Cross	Dublin	Training of volunteers	€2,500.00
Specialta Special Olympics Club	Dublin	Activities and events with patients of Peamount Hospital	€1,000.00
Genetic and Inherited Disorders Organisation	Dublin	Information day to highlight the problems faced by people with very rare disorders	€1,500.00
North Fingal ADD/ADHD Support Group	Dublin	Information booklet	€2,000.00
Express Yourself Ltd	Dublin	Research into Applied Behavioural Analysis	€1,000.00
RUA - Raising Understanding and Awareness	Dublin	Sexual education for those with intellectual disabilities	€750.00
Action for Young People with Special Needs	Kerry	Summer programme for young people with special needs	€500.00
Irish Lupus Support Group	Kerry	Social activities	€260.00
MS Ireland	Kilkenny	Social activities for people with MS and their families	€1,000.00
Down Syndrome Ireland	Kilkenny	Residential respite break	€500.00
Arthritis Ireland	Limerick	Pain management course	€500.00
Meath Local Sports Partnership	Meath	Activities for adults with special needs	€1,200.00
Special Needs Active Parents	Monaghan	Yoga course	€500.00
Irish Sex Education Network	Monaghan	Outreach work for people with Intellectual Disabilities	€1,500.00
Sisters Of Charity Jesus and Mary	Offaly	Dance classes for service users with special needs	€620.00
Camphill Community	Tipperary	Summer camp for children with special needs	€1,000.00
South Tipperary Autism Support Group	Tipperary	Summer respite programme	€700.00
Enable Ireland	Tipperary	Social outings	€500.00
			€23,330.00

Financial Statements 2008*

Balance Sheet as at 31st December	2008	2007
	€	€
Tangible Fixed Assets		
Investments (Endowment Funds)	22,875,516	20,077,774
Income Due on Endowments	310,346	196,735
	<u>23,185,862</u>	<u>20,274,509</u>
Current Assets		
Due from holding company	1,328,392	1,014,053
Cash at Bank	1,361,554	898,271
Debtors & Prepayments	1,100	8,470
	<u>2,691,046</u>	<u>1,920,794</u>
Creditors (amounts falling due within one year)		
including deferred endowment/private fund income	(1,305,684)	(701,245)
Net Current Assets	<u>1,385,362</u>	<u>1,219,549</u>
Net Assets	<u>24,571,224</u>	<u>21,494,058</u>
Financed By:		
Unrestricted funds	558,370	551,394
Restricted Funds	829,925	568,557
Endowments	<u>23,182,929</u>	<u>20,374,107</u>
	<u>24,571,224</u>	<u>21,494,058</u>

Income & Expenditure for the Year Ended	2008	2007
	€	€
Grantmaking Income		
Private Donations Received	458,546	2,321,154
Endowment Fund Income	<u>529,638</u>	<u>371,011</u>
	<u>988,184</u>	<u>2,692,165</u>
Grantmaking Expenditure	<u>988,184</u>	<u>2,692,165</u>
Operational Income		
Donations	29,039	115,256
Mott Grant for Operational Costs	20,871	99,980
Bank Interest Received	84,011	72,741
Management Charge Endowment Funds	<u>226,913</u>	<u>196,822</u>
	<u>360,834</u>	<u>484,799</u>
Operational Expenditure		
Fundraising Costs	211,436	155,758
Grant Administration Costs	53,993	43,616
Support Costs and Overheads	<u>88,429</u>	<u>54,543</u>
	<u>353,858</u>	<u>253,917</u>
Excess income over expenditure	<u>6,976</u>	<u>230,882</u>

*Please note that these figures are draft and prior to audit.

Our audited financial Statements will be presented in accordance with "Accounting and Reporting for Charities: Statement of Recommended Practice".

Endowment Fund Year End Balances

There has been a dramatic increase in endowment fund size over each of the last five years rising from just over €4,000,000 in 2003 to over €22,000,000 in 2008.

The returns from this Permanent Fund have helped to significantly increase Grant-Making and will continue to enable Grant-Making forever.





32 Lower O'Connell Street, Dublin 1, Ireland
Tel: +353 1 874 7354 Fax: +353 1 874 7637
Email: info@foundation.ie www.communityfoundation.ie



Excellence Through People

connecting people who care with causes that matter

The Community Foundation for Ireland Ltd. Registered in Ireland No. 338427. Charity No. CHY 13967
Registered Office: One Spencer Dock, North Wall Quay, Dublin 1. Company Limited by Guarantee.